



Self-Propelled Articulating Booms

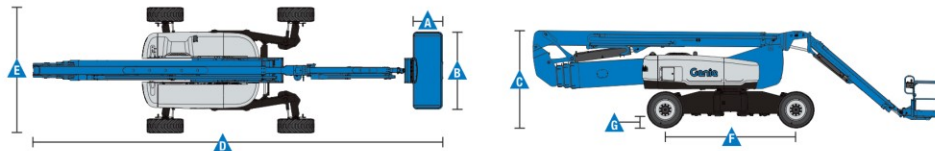
ZX™ -135/70

Specifications

Model	ZX-135/70	
Measurements	US	Metric
Working height maximum*	141 ft	43.15 m
Platform height maximum	135 ft	41.15 m
Horizontal reach max - riser extended	59 ft 2 in	18.03 m
Horizontal reach max - riser retracted	69 ft 9 in	21.26 m
Up and over clearance maximum -		
riser extended	75 ft 6 in	23.01 m
riser retracted	32 ft 6 in	9.91 m
Below ground reach	19 ft 3 in	5.87 m
▲ Platform length - 8 ft / 6 ft model	3 ft / 2 ft 6 in	0.91 m / 0.76 m
▲ Platform width - 8 ft / 6 ft model	8 ft / 6 ft	2.44 m / 1.83 m
▲ Height - stowed	10 ft 1.5 in	3.09 m
▲ Length - stowed	42 ft 5 in	12.93 m
▲ Width - axles retracted	8 ft 2 in	2.49 m
Width - axles extended	12 ft 11 in	3.94 m
▲ Wheelbase - axles retracted	13 ft 6 in	4.11 m
Wheelbase - axles extended	13 ft 6 in	4.11 m
▲ Ground clearance - center	1 ft 3 in	0.38 m
Productivity		
Lift capacity	600 lb	272 kg
Platform rotation	160°	
Vertical jib rotation	110°	
Turntable rotation	360° continuous	
Turntable tailswing - axles extended riser up	2 ft 8 in	0.81 m
Turntable tailswing - riser down	14 ft 1 in	4.29 m
Drive speed - stowed	3.0 mph	4.8 km/h
Drive speed - raised	0.68 mph	1.1 km/h
Lift speed to full height	96 sec	
Gradeability - stowed**	45%	
Tilt sensor activation	front to back: 4.5° and side to side: 4.5°	
Turning radius - axle retracted: inside	26 ft 4 in	8.03 m
outside	32 ft 8 in	9.96 m
Turning radius - axle extended: inside	9 ft 6 in	2.90 m
outside	20 ft 3 in	6.17 m
Controls	12 V DC proportional	
Tires	445D50/710 18 ply foam-filled	
Power		
Power source	74 hp (55 kW) Deutz turbo diesel, Tier 4f, 2.9 L	
Auxiliary power unit	12 V DC	
Hydraulic tank capacity	65 gal	246.1 L
Fuel tank capacity	40 gal	151.4 L
Weight***		
	46,500 lb	21,092 kg

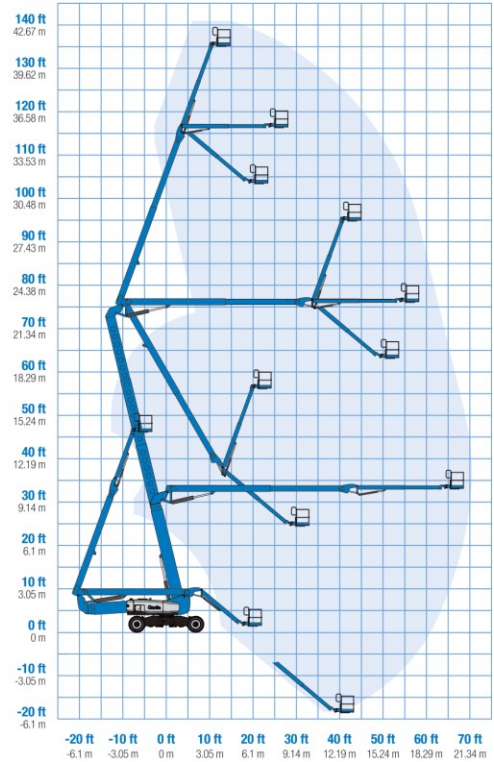
Standards Compliance

ANSI A92.20, CSA B354.6, EN 280, AS 1418.10



www.genielift.com

Range Of Motion ZX-135/70



* The metric equivalent of working height adds 2 m to platform height.

U.S. adds 6 ft to platform height.

** Gradeability applies to driving on slopes. See operator's manual for details regarding slope ratings.

*** Weight will vary depending on options and/or country standards.



Self-Propelled Articulating Booms

ZX™ -135/70

Features

Standard Features	Easily Configured To Meet Your Needs	Options & Accessories
<p>Measurements</p> <ul style="list-style-type: none"> • 141 ft (43.15 m) working height • 69 ft 9 in (21.26 m) horizontal reach • 75 ft 6 in (23.01 m) up and over clearance • Up to 600 lb (272 kg) lift capacity <p>Productivity</p> <ul style="list-style-type: none"> • Mini XChassis™ extendable axles • 12 to 20 ft (3.66 to 6.1 m) Jib-Extend™ • 160° Hydraulic platform rotation • Proportional joystick controls • Hydraulic oil cooler • Drive enable • AC power cord to the platform • Horn • Hour meter • Tilt alarm • Descent alarm • 360° continuous turntable rotation • Positive traction 4WD • Two speed wheel motors • Four wheel high angle steer • Four steering modes: front, rear, crab and coordinated • Four wheel brakes • On board full diagnostics and engine monitoring display • Lift Tools™ Work Tray • Platform Load sense system • Entry Toeboard • Lift Connect™ Telematics • Lift Guard™ Contact Alarm <p>Power</p> <ul style="list-style-type: none"> • 12 V DC auxiliary power • Auto engine fault protection • Swing out engine tray 	<p>Platform Options</p> <ul style="list-style-type: none"> • Steel 6 ft (1.83 m) platform with side swing gate • 8 ft (2.44 m) tri-entry platform with side swing gate (standard) <p>Engine Options</p> <ul style="list-style-type: none"> • 74 hp (55 kW) Deutz turbo diesel, T4f <p>Drive/Steer</p> <ul style="list-style-type: none"> • 4WD (standard) • 4WS (standard) <p>Tire</p> <ul style="list-style-type: none"> • Rough terrain foam-filled (standard) 	<p>Productivity Options</p> <ul style="list-style-type: none"> • Lift Guard Platform Mesh - Half • Lift Guard Platform Mesh - Full • Lift Guard Platform Mesh - Screen (8ft platform only) • Platform top auxiliary rail • Welder package • Welder Ready package • Cold weather, fire resistant, or biodegradable hydraulic oil • Hostile environment kit • Thumb rocker steer • Light package • Pipe cradle (pair)** • Alarm package • Panel cradle package • Lockable platform control box cover • Operator Protective Structure** • Fall Arrest Bar • Lift Tools Access Deck* • Lift Tools Expo Installer* <p>Power Options</p> <ul style="list-style-type: none"> • 12 kW welder ready AC generator 208 V / 110 V / 60 Hz • 7.5 kW welder ready AC generator - 208 V / 120 V / 60 Hz • 3 kW AC generator - 110 V / 60 Hz • Cold weather kit • Diesel scrubber/catalytic muffler*** • Intake air pre-cleaner • Positive air shut off system (Deutz engine only)



* Available as limited regions
** Available through aftermarket parts only
*** Tier 4i engine only

Genie United States

6464 185th Ave. NE
Redmond, WA 98052
Telephone +1 (425) 881-1800
Toll Free in USA/Canada +1 (800)-536-1800
Fax +1 (425) 883-3475

Distributed By:



Effective Date: January, 2020. Product specifications and prices are subject to change without notice or obligation. The photographs and/or drawings in this document are for illustrative purposes only. Refer to the appropriate Operator's Manual for instructions on the proper use of this equipment. Failure to follow the appropriate Operator's Manual when using our equipment or to otherwise act irresponsibly may result in serious injury or death. The only warranty applicable to our equipment is the standard written warranty applicable to the particular product and sale and we make no other warranty, express or implied. Products and services listed may be trademarks, service marks or trade names of Terex Corporation and/or their subsidiaries in the USA and many other countries. Terex, Genie and AWP are registered trademarks of Terex Corporation or its subsidiaries. © 2020 Terex Corporation.

ZX135 3.5K 0109L Part No. 109366

www.genielift.com